

MARTIN OSNER
Signature Collection





One-of-a-Kind Art Pieces

In this collection, we celebrate the remarkable fusion of traditional painting and fine art photography. What you're about to explore is more than just a simple anthology; it's a carefully curated selection of my one-of-a-kind artworks. Within these pages, you'll find pieces crafted for exhibitions and commissioned works, each representing a piece of my evolving artistic journey.

I recall a time when I felt like an artist trapped within a photographer's body. However, in recent times, it's intriguing how the photographer has gracefully taken a step back, allowing my artistic side to flourish. It's an ongoing dance between these two passions, where the act of working with palette knives and brushes to create an original artwork has become just as fulfilling as capturing moments through the lens.

At times, I find inspiration in my own photography, using it as a canvas for my paintbrush. Yet, there are moments, especially when diving into the world of abstracts, when the entire process is a painting journey from start to finish, with a hint of mixed media for that extra artistic flair. The support I've received for both my fine art photography and these one-of-a-kind artworks has been nothing short of humbling, and I'm incredibly honored to share this artistic evolution with you.

Martin Osei



ZINHLE

SOLD

Original Painting 75cm x 105cm
Acrylic & Ink on Metal

This captivating portrait celebrates the beauty of African women through vibrant, expressive artistry. Painted with a palette knife in a rich impasto style, the use of ink and acrylic paint brings texture and depth to the piece. Bold strokes of orange, yellow, and blue dominate the canvas, a tribute to the vibrant colors of Africa. This one-of-a-kind masterpiece radiates energy and individuality, capturing the strength and grace of its subject in a powerful, original statement.



THANDIWE

Original Painting 60cm x 78cm
Acrylic & Ink on Canvas

Thandiwe, whose name means "beloved" in tribal belief, carries herself with youthful grace, her presence glowing softly like the dawn. As the second oldest of seven equally gorgeous sisters, she stands out with a quiet charm that is uniquely hers. Their beauty seems like one from afar, but Thandiwe's gentle shyness sets her apart, a reflection of her introspective spirit.

[More Information >>](#)



AYANDA **SOLD**

Original Painting 65cm x 102cm
Acrylic & Ink on Metal

From the African Queen series, Ayanda radiates quiet strength and timeless beauty. Draped in richly textured orange and turquoise attire, her elegant silhouette is crowned with a towering headwrap that echoes both heritage and pride. The brushwork—a fusion of realism and abstract impressionism—creates a tactile rhythm, mirroring the heartbeat of Africa itself.





THREADS OF ALCHEMY

Threads of Alchemy bursts with bold orange and turquoise, weaving a graphic composition of energy and transformation. Dynamic lines and hues intertwine, evoking the magic of creation and the essence of change.

Original Painting 80cm x 64cm
Paint and Mixed Media on Metal

[More Information >>](#)



CITY OF GOLD

[More Information >>](#)

Original Painting 60cm x 60cm Acrylic on Metal

"An abstract impressionistic piece that captures the grandeur of a city and its reflection in the water below. Soft, warm tones create a serene atmosphere, while bold orange and turquoise hues highlight the buildings. Accents of gold and a radiant wash evoke the biblical image of heaven's golden streets, blending the divine with the urban. Crafted with a palette knife, brush, and sponge, this artwork presents a mesmerizing, almost spiritual vision of urban majesty.



NOBUHLE

Original Painting 105cm x 87.5cm
Acrylic & Ink on Canvas

'Nobuhle' stands as a powerful embodiment of strength and resilience, her gaze unwavering, ready to defend her heritage. Her name, meaning "of beauty," reflects not only her physical elegance but also the inner grace that defines her as a leader. Adorned with symbols of her tribal identity, she carries the weight of her ancestors with dignity and pride.

[More Information >>](#)



SOPHIA

[More Information >>](#)

Original Painting 54cm x 54cm Acrylic and Ink on Metal



Sofia's beauty and shyness intertwine in a delicate veil of abstraction. Beneath a web of expressive lines, hints of gold reveal her quiet radiance, yet she remains partially concealed. Layers of texture and movement mirror her enigmatic presence—guarded yet luminous, waiting to be discovered.



KLARA

Original Painting 108cm x 102cm Paint and Metallic Leaf on Canvas **SOLD**

Part of the African Art Fusion collection, Klara is a striking collaboration by Martin Osner and Simon Shone, portraying a mature woman as a tribal icon. Her calm, dignified presence is framed by a golden halo, reimagining religious reverence through an African lens. Adorned in symbolic fabrics and hand-beaded necklaces, she wears a singular, handcrafted 18-carat gold plated earring — a tribute to heritage and refined artistry. Klara celebrates timeless beauty, strength, and the sacred spirit of African womanhood.

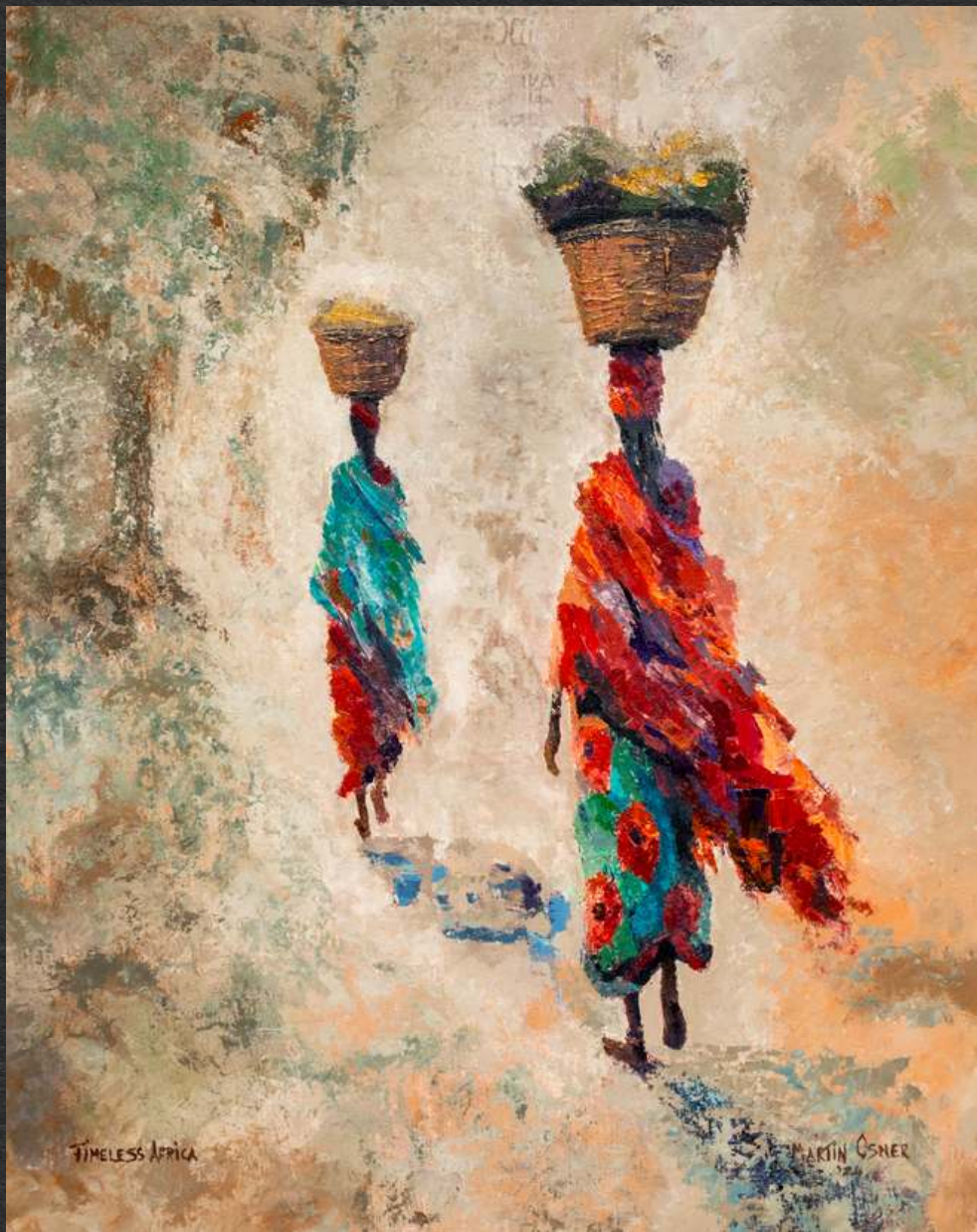


EMERALD SERENITY

Bo Plaas, an Overberg haven revealed—a steadfast sentinel built on a solid foundation beside the shade of trees that weave tales with the whispering secrets of the wind. The unseen canvas—a foundation sturdy and enduring. Yet, in the hidden depths, water, life's sustaining source. In this poetic tableau, find surety in the rock and nourishment in the ever-flowing currents of existence.

[More Information >>](#)

Original Painting | Acrylic and ink on metal | 105x150cm



TIMELESS AFRICA

Original Painting 102cm x 82cm
Acrylic & Ink on Canvas

Two tribal women walk along a sunlit path, carrying large baskets filled with the fresh harvest balanced on their heads. Their steps are steady and purposeful, their voices low as they talk and laugh together, embodying a quiet transcendence that reflects their deep connection to the land and the rhythm of life.

[More Information >>](#)



MAJESTIC HOMESTEAD

"Majestic Homestead" is a grand 320cm wide acrylic painting on metal, capturing the serene beauty of a homestead in the Koo mountain valley. As the first light breaks over the landscape, it illuminates the peach trees, creating a warm, golden glow. The scene is balanced by a winding gravel road that leads to the farmhouse, evoking a sense of calm and connection to the land. This commissioned piece beautifully reflects the peaceful mood of the valley at dawn.

Original Painting on Metal | 320cm x 100cm **SOLD**

THE GOLDEN GIRLS

Original Painting 57cm x 65cm
Acrylic & Ink on Canvas

This classic piece from the African Queen series portrays two women adorned in vibrant attire, exuding grace and confidence. The abstract impressionistic style blends bold patterns, typography and rich colours, evoking the energy of a modern African celebration. Their poised figures reflect tradition intertwined with contemporary elegance. The artwork celebrates the beauty and spirit of African identity in a dynamic, festive setting.

[More Information >>](#)





EMERALD SERENITY

Original Painting - Private Commission
120cm x 120cm Acrylic on Metal **SOLD**

Drawing inspiration from Jackson Pollock's expressive style of painting, "Emerald Reverie" is a work of art painted on an aluminium sheet that engages both visual and tactile senses. The rough texture captures a sense of movement and fluidity, while the raised paint adds depth and character. The interplay between light and dark, chaos and harmony, results in a striking piece of abstract art.



RECOLLECTIONS OF SUMMER

Acrylic & Ink on Metal
Original Painting 150cm x 110cm

*Memories of summer down by
the sea, Nostalgic moments,
forever with me. The ocean so
vast, and so blue, turquoise
waves, washing away the
hue.*

[More Information >>](#)



ELIZA

Original Painting 120cm x 150cm
Acrylic & Ink on Metal **SOLD**

*I entered your life, a stranger
you had never met. You took
me in with open arms, rife
with a warmth I will never
forget. Together, we stood
and faced the world, creating
memories along the way.
Now, as nostalgia's sails are
unfurled, I thank you for every
single day. For you were a
constant guide in times of joy
and of distress. With you, I've
never had to hide; my heart,
my soul, my very best.*

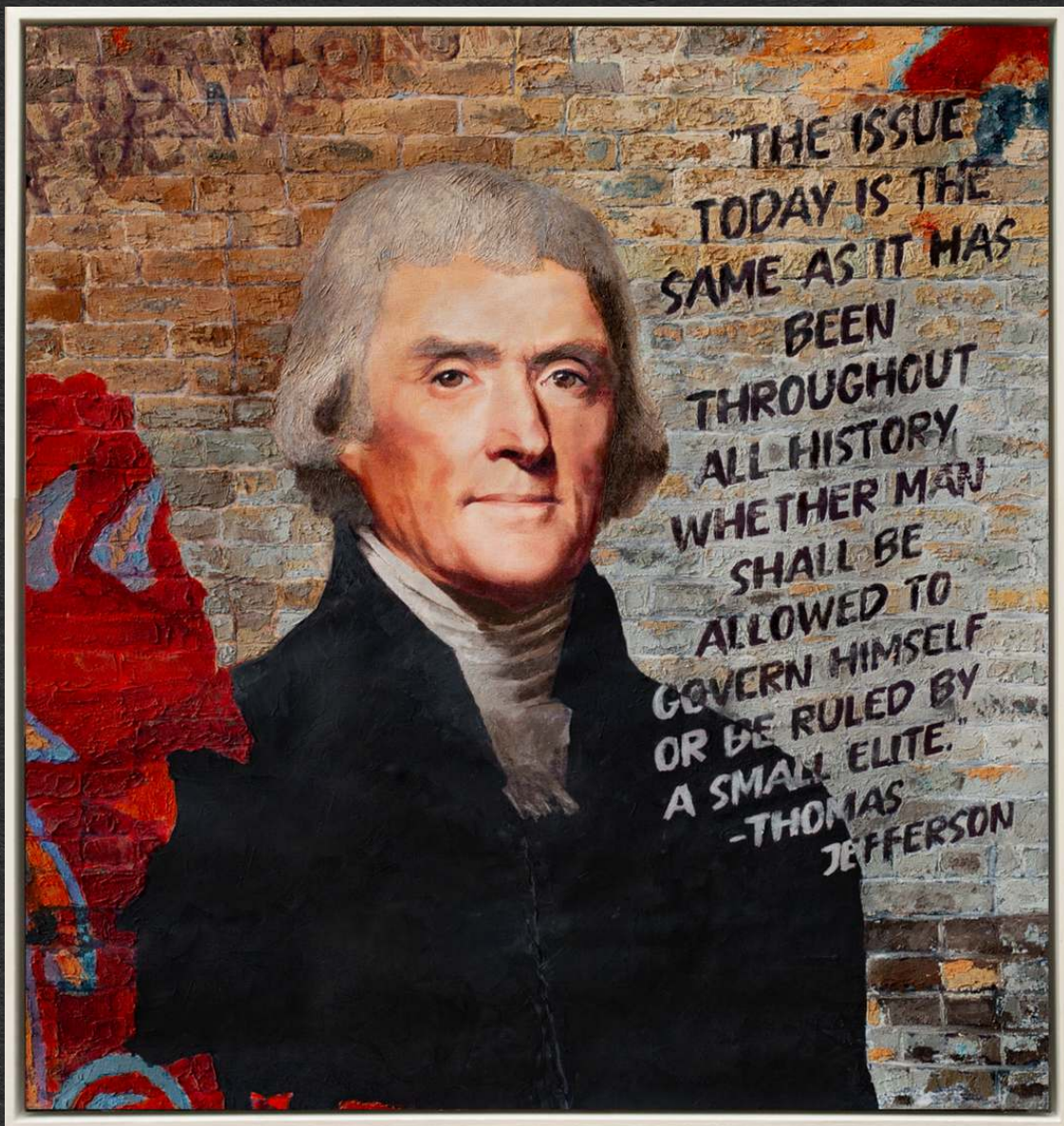
[More Information >>](#)

JACKIE & JIMMY



Original Commission | Acrylic and ink on metal | 120x90cm **SOLD**

APOSTLE OF DEMOCRACY



Original Commission | Acrylic and ink on canvas | 126x120cm

SOLD

JANICE JOPLIN



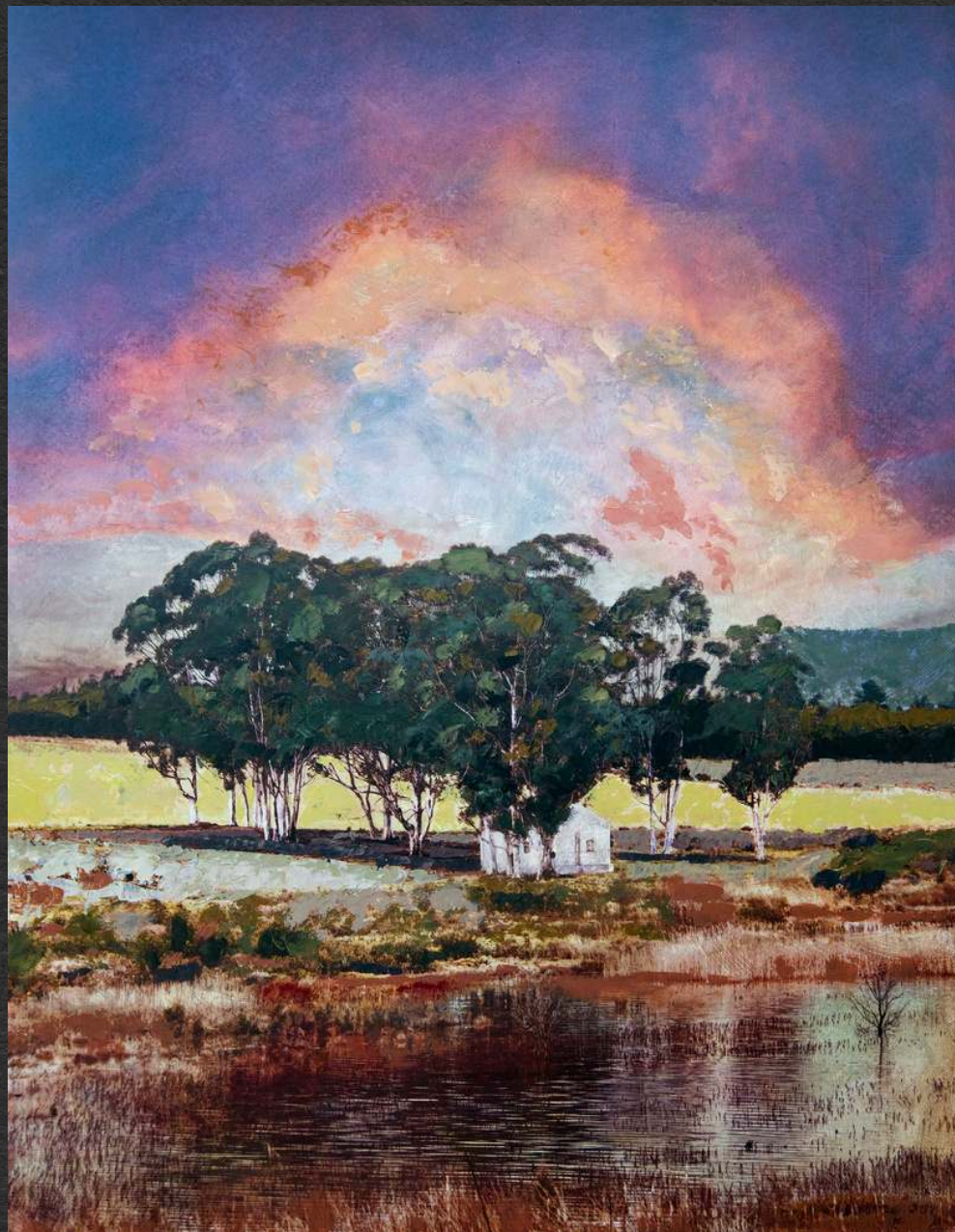
Original Commission | Acrylic and ink on canvas | 190x133cm

SOLD

SUNSET AT
GRAYMEAD ROAD
Original Painting 75cm x 105cm
Acrylic & Ink on Metal

An acrylic artwork that showcases an old farm house set against a captivating sunset. The piece radiates nostalgia and history, with the weathered house standing as a symbol of enduring charm. The sunset's warm, golden tones provide a serene backdrop, inviting viewers to reflect on the beauty of the past and the tranquility found in the country side.

[More Information >>](#)





HILLSIDE HARMONY

[More Information >>](#)

Original Painting 70cm x 70cm Acrylic and Ink on Metal

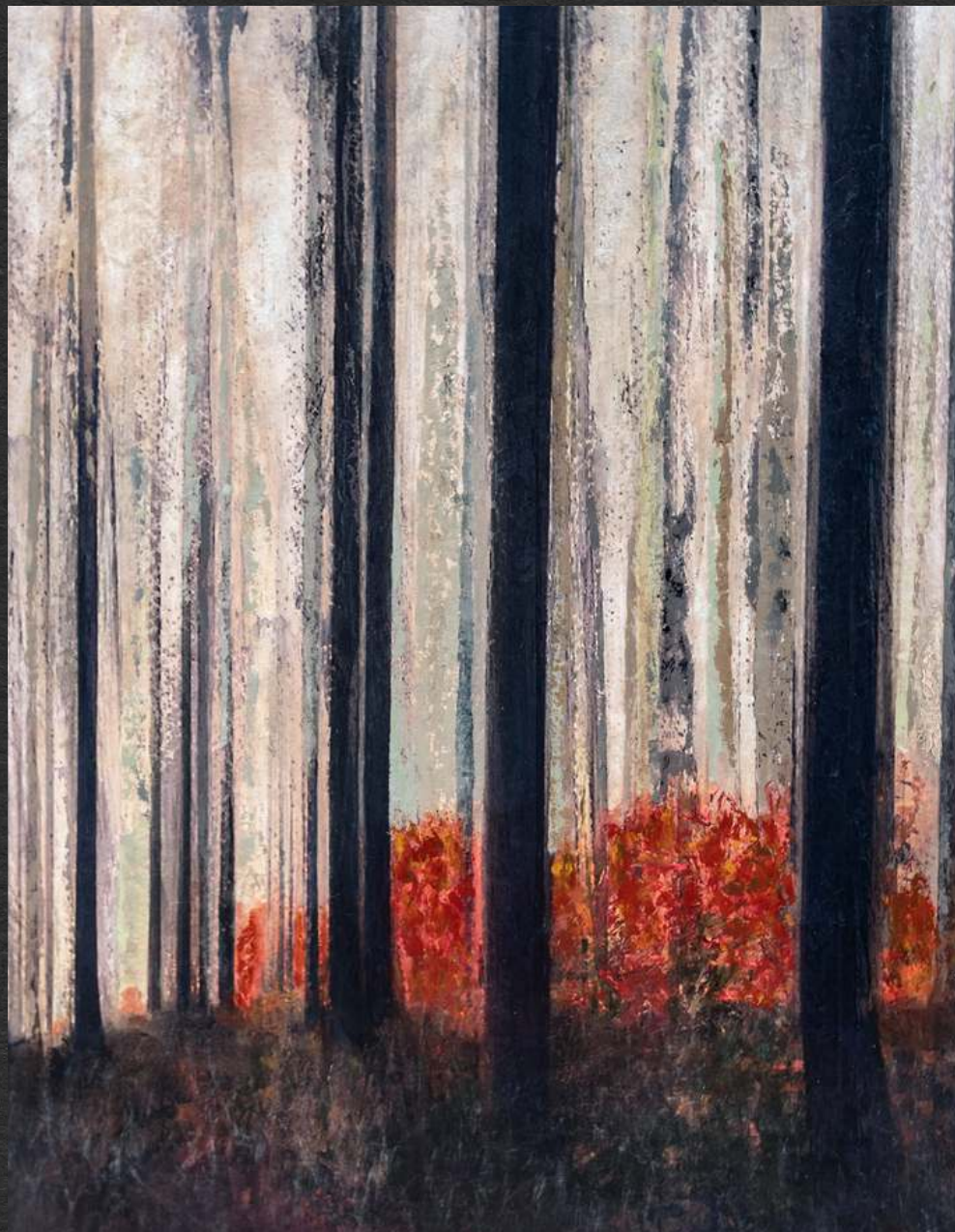
Memories of an old seaside cottage on the hill along the west coast come flooding back. It's a place where time stands still. In that weathered haven, tales of days long past are whispered, echoing the essence of the ocean breeze. A resilient tree stands sentinel, a witness to the years, and a washing line dances in the breeze. A symphony of memories woven into the very fabric of the place, eternally tethered to the ebb and flow of the ocean's embrace.

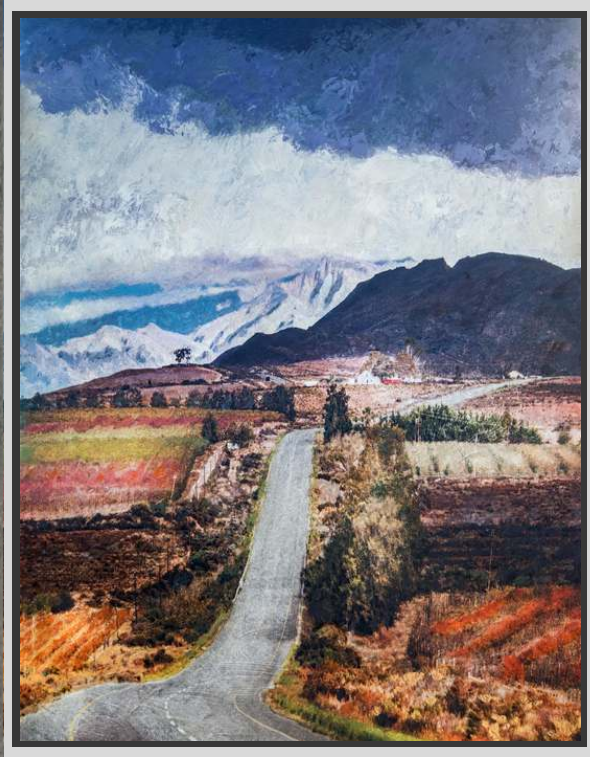
ANCIENT WOODLAND

Original Painting 120cm x 150cm
Acrylic & Ink on Metal

In the heart of the forest, a special place, Where the light pierces the canopy with grace. The colours, vibrant, surreal and divine. An ethereal moment, frozen in time. The rustling of leaves, a gentle breeze, a moment of tranquillity, a moment to seize. The forest holds secrets, so ancient and old. A tale of the past, forever to be told.

[More Information >>](#)





ROAD TO MONTAGU

Original Painting 75cm x 105cm

Acrylic & Ink on Metal

"Road to Montagu" is a vibrant and inviting artwork featuring a winding road leading into the distance, adorned with a rich palette of colors. It captures the anticipation of embarking on a journey and celebrates the beauty of exploration and the promise of new horizons.

[More Information >>](#)



HOMESTEAD REVERIE **SOLD**

With closed eyes, nostalgia floods my mind; the old farm house on the top of the hill I find, its creaky floors and wooden walls. A place where memories forever recall.

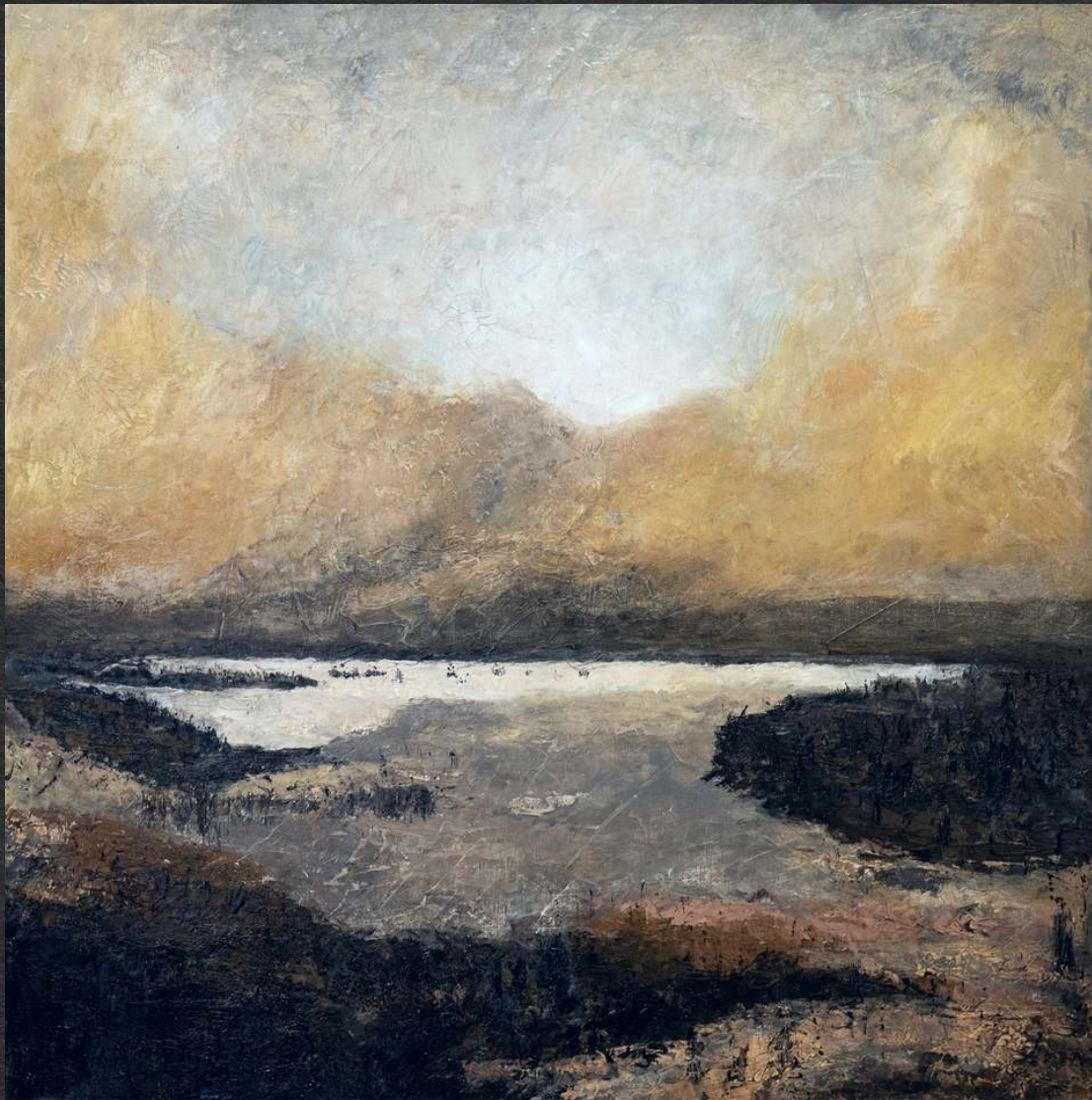
Acrylic & Ink on Metal
Original Painting 150cm x 150cm



STATURE

An aged tree stands tall and grand, with years of wisdom at hand; in its roots, countless memories abide, a place where past memories reside.

Acrylic & Ink on Metal
Original Painting 150cm x 150cm
SOLD



AMBER REVERIE

[More Information >>](#)

Original Painting 46cm x 46cm Acrylic on Metal

Beneath a warm, dramatic sky, the landscape unfolds in hues that echo the earth's embrace. A distant lake beckons, its reflection a mirror to the symphony of warm tones above. A tapestry of emotion—a moment suspended in the poetry of an abstract impressionist's vision.



VALLEY OF SOLITUDE



VALLEY OF SOLITUDE

Original Painting (triptych) 300cm x 127cm
Acrylic & Ink on Metal **SOLD**

In this impressive triptych, a solitary tree graces the hillside, facing the Valley of Solitude. The meadow surrounding it sways with long African grass, and a moody pastel sky sets the backdrop. The grand scale and pastel palette infuse this artwork with a sense of awe and serenity, making it a striking celebration of the African landscape.



OX - WAGON AT GANNAGA

This painting captures the essence of history against the backdrop of the vast and rugged expanse of the Klein Karoo, a desolate landscape. An abandoned wagon stands as a weathered testament to the bygone era of exploration, beckoning viewers to journey into the past. Created with a skilful blend of acrylic paints and ink, the artwork masterfully evokes a sense of nostalgia.

Acrylic & Ink on Metal
Original Painting 130cm x 65cm

[More Information >>](#)

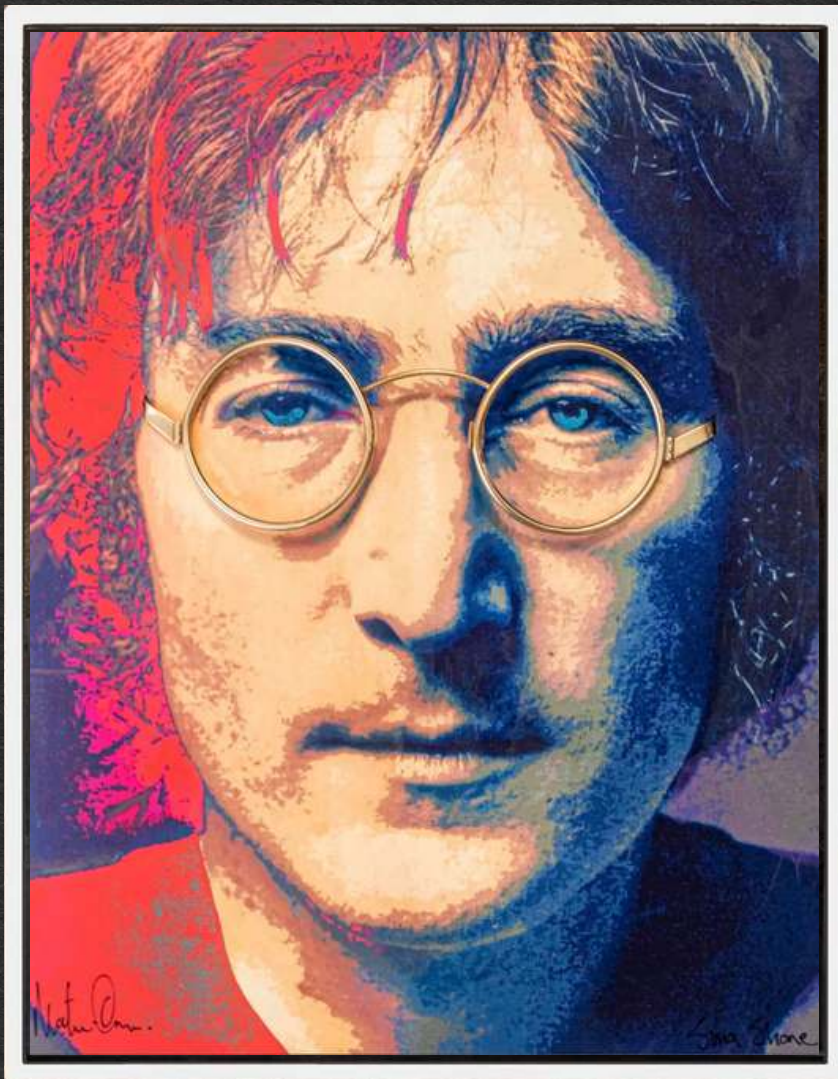


TWILIGHT HUES ON COUNTRY LANE

A country road winds past an ancient telephone pole, its weathered essence murmuring tales of bygone years. Along its path, it passes the hush of the countryside's quietude. Beneath a dramatic sky painted in hues of a tranquil evening, it bathes a haven—a peaceful retreat from the noise of the world, life's serenity in its quieter moments.

Original Painting | Acrylic and ink on metal | 105x150cm

[More Information >>](#)



GOLDEN VISION

"Golden Vision" is a vibrant pop art portrait of the iconic musician John Lennon, created by Martin Osner using colour ink and watercolour paint. The piece captures the brilliance of Lennon's talent, with a standout feature being the 18-karat gold-plated glasses sculpted by Simon Shone.

The golden glasses not only highlight Lennon's iconic style but also symbolise the timeless and enduring impact of his music and vision. The artwork celebrates Lennon's creative genius and his lasting influence on music and culture. Imagine that!

1/1 | 18 Karat Gold Sculptured Spectacles on an Ink and Watercolour Painting. | 60x40cm

[More Information >>](#)



MANIC MONDAY

Manic Monday, a one-of-a-kind abstract creation by Fine Artist Martin Osner, pays homage to the artistic influence of Jackson Pollock. Crafted as a centerpiece for an exhibition's grand opening, this original artwork is an oil painting on ultra-chrome ink. In a departure from Pollock's style, Osner incorporated visual triggers by introducing concrete texture and text underlays before layering on the paint. When experienced in person, this large collector's piece is a breathtaking testament to the world of abstract art.

[More Information >>](#)

1/1 | Acrylic and ink on Canvas | 180cm x 140cm



PATTERNS OF THE UNSPOKEN

[More Information >>](#)

Original Painting | Acrylic and Oil on Cotton Rag | 51x38.5cm



EPHEMERAL WALTZ

[More Information >>](#)

In radiant hues, Belinda graces the stage, a dancer enveloped in a rainbow's embrace, where each movement unfolds in an ephemeral waltz.

Original Painting | Acrylic and ink on canvas | 73x88cm



1/1 | Acrylic and ink on metal | 120x150cm

TEARS OF EDEN

In that tear, a prayer was heard, a plea for forgiveness, every word. Nostalgia filled Eve's heart and mind as memories of grace she hoped to re-find.

[More Information >>](#)



MIDNIGHT MELANCHOLY

In the hush of a breezeless eve, the ocean unveils hues in the sun's parting embrace. A moody sky, a farewell canvas aglow with warmth, paints the last fleeting moments. The tide whispers into a lagoon, a sanctuary of tales untold. Ocean and sky, silent witnesses to time's eternal dance. This painting breathes serenity and introspection, where day and night unite in quiet communion, wrapped in the midnight's expectant embrace.

Original Painting on Metal | 120cm x 150cm

[More Information >>](#)



ABSTRACT SERENITY #1&2

SOLD





ABSTRACT SERENITY NO.3

Martin Osner | 1/1 | Painting on Metal | 52x52cm

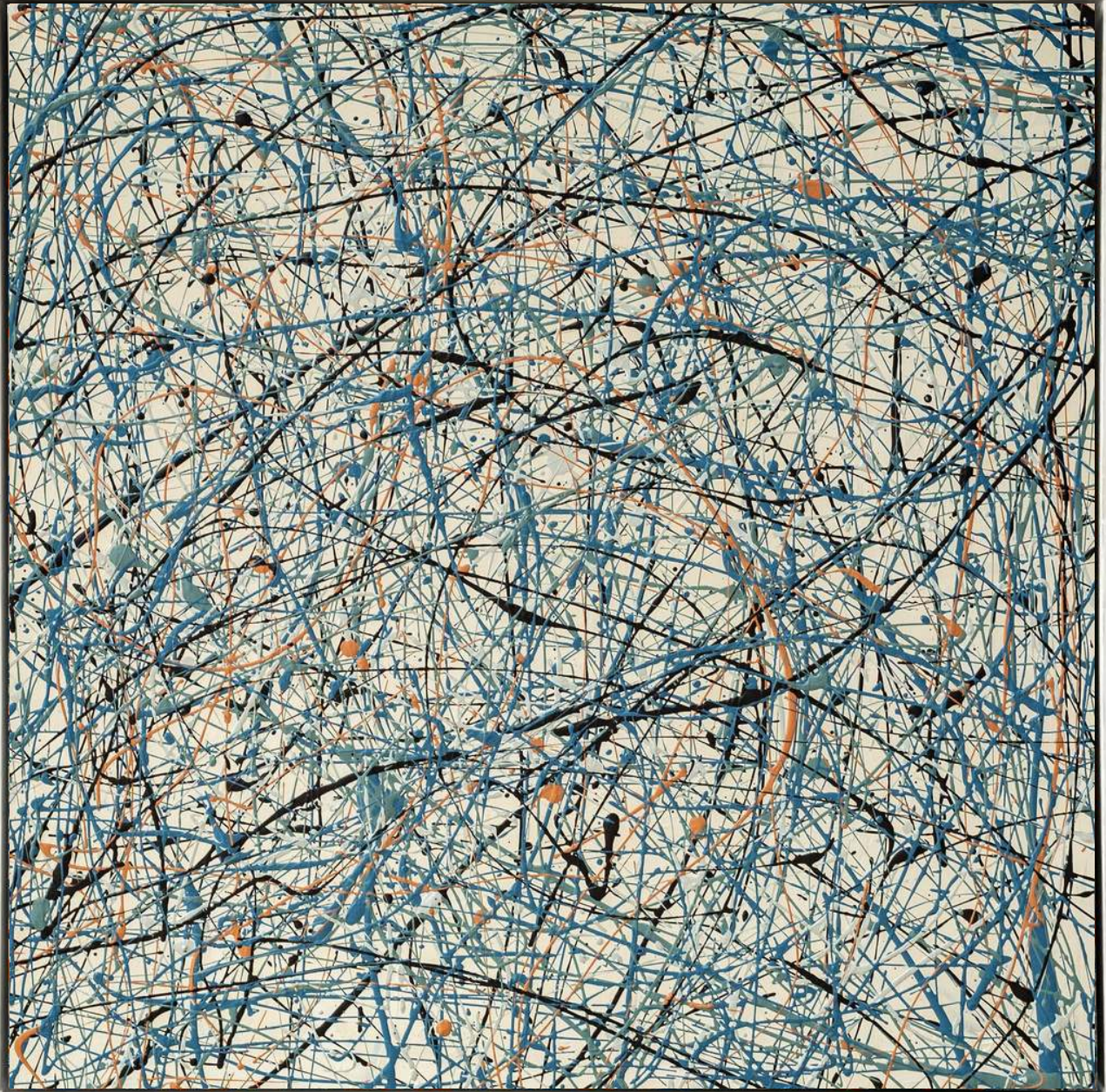
SOLD



ABSTRACT SERENITY NO. 4

Martin Osner | 1/1 | *Painting on Metal* | 44x44cm

SOLD



ABSTRACT SERENITY NO.5

Martin Osner | 1/1 | Painting on Metal | 52x52cm

SOLD



ECHOES OF THE VALLEY

In the embrace of the valley, the tree stands as a sacred witness, its branches reaching toward the heavens. The stream flows with a quiet melody, a reflection of divine harmony and eternal grace. Mountains rise in solemn majesty, guarding this Eden-like sanctuary. Here, creation speaks in whispers, echoing the presence of God's hand.

Ed 20 | Water Colour on Paper | 82cm x 64cm

[More Information >>](#)

Embracing the Fusion of Artistic Passions

My artistic journey has been a remarkable dance between two passions: traditional painting and fine art photography. This fusion has taken me from limited edition works to the creation of one-of-a-kind original artworks. It's an evolution that's defined my path and speaks to my artistic soul. I often reflect on that serendipitous winter day in 1984 when photography and I crossed paths quite unexpectedly. This encounter redirected the course of my life and set me on a transformative journey. While I had always known of my artistic inclination since my school days, I was fortunate to have parents who, out of love and concern, sought to shield me from the challenges of pursuing a career in the arts. I was encouraged to seek a more "stable" path. However, photography emerged as the medium that allowed me to chase my artistic dream without immediately carrying the title of "artist." This calmed my parents' concerns and set me on a creative adventure.

Over the past twenty-eight years, my artistic methodology has taken many detours, leading me on a path of self-discovery. This journey has shaped my approach into one that values simplicity and honesty. For me, a photograph embodies an undeniable sense of realism, providing a new perspective that's easy to connect with. In photography, I observe, understand, experience, and connect. Everyday life becomes my muse, and I see all subjects as potential compositions.

The conceptual transformation that a camera and lens offer is something I truly relish, even though I've never been a dedicated painter. I perceive and experience the world through the lens of a painter, using light and composition as my expressive tools. Life itself is my canvas, and I often feel like a painter trapped in a photographer's body. The camera and lens have become my paint and brushes, allowing me to create themes and groupings of images within my portfolio. It's not uncommon for me to work on various projects simultaneously, often spanning years. One of my greatest joys lies in using photography as a foundation to craft mixed media pieces. My creative process is guided by intuition, devoid of restrictions on substrates, mediums, or techniques. Emotion and experimentation fuel my art, and I allow the final piece to evolve organically, embracing the beauty of imperfection.

In my work, I pay intense attention to elemental forms, rhythms, and patterns, finding simplicity to be a compelling force in visual impact. My artistic style draws inspiration from several great artists and photographers. The work of the legendary Henri Cartier-Bresson has influenced my social commentary and documentary pieces, while the teachings of Ansel Adams have left an indelible mark on my landscape photography.



On the other hand, my still-life and abstract studies have been described as painterly expressionistic, drawing inspiration from the works of Henri Matisse and, more recently, Jackson Pollock. My spiritual journey finds solace and contentment behind the lens and within my studio, where art comes to life.

Today, I feel I have come full circle, and I'm as comfortable behind the lens as I am holding a palette knife or brush in front of a canvas. I firmly believe that my steps have been guided along a purposeful path by an awesome and caring Creator. I've never wavered in my love for photography or my burning passion for art. It's something I could never relinquish—it's not just what I do; it's what I love, and it's an integral part of who I am.



A Personal Invitation ...

If you find yourself in Cape Town, I invite you to visit my private art collection in Hout Bay. Viewing is by appointment. I believe in the power of art to inspire, transcend boundaries, and ignite meaningful conversations. Come and view our gallery and discuss commissions. I look forward to sharing my journey with you in person.





MARTIN OSNER
Signature Collection



14 Luisa Way, Hout Bay, Cape Town | +27 (0) 21 7906494 | +27 (0) 834721717 | info@osnergallery.com